

Smithfield Township's MS4 Program

(Municipal Separate Storm Sewer System)



Presentation provided by:



June 14, 2023

MS₄ Program

- An MS₄ is a collection of storm sewer structures, including basins, ditches, inlets, and piping that are designed to collect and discharge stormwater into streams without prior treatment.
- In 2016 the Township was required to apply for a permit through the Pennsylvania Department of Environmental Protection due to the existing high quality streams, such as the Brodhead and McMichael Creeks, and the population density. This permit has an effective date of September 1, 2018 and expires August 31, 2023.
- A renewal application was submitted to PADEP on March 28, 2023.
- Since the effective permit date, LVL Engineering Group and Smithfield Township have partnered to comply with several permit requirements including the 6 Minimum Control Measures, Pollutant Control Measures, and sediment load and pathogen reduction.
- The Township is currently in Year 5 of the 5-Year Permit Period. Year 5 ends June 30th.

Minimum Control Measures (MCM)

MCM #1 – Public Public Education and Outreach

MCM #2 – Public Participation and Involvement

MCM #3 – Illicit Discharge Detection and Elimination

MCM #4 – Construction Site Stormwater Runoff Controls

MCM #5 – Post Construction Runoff Controls

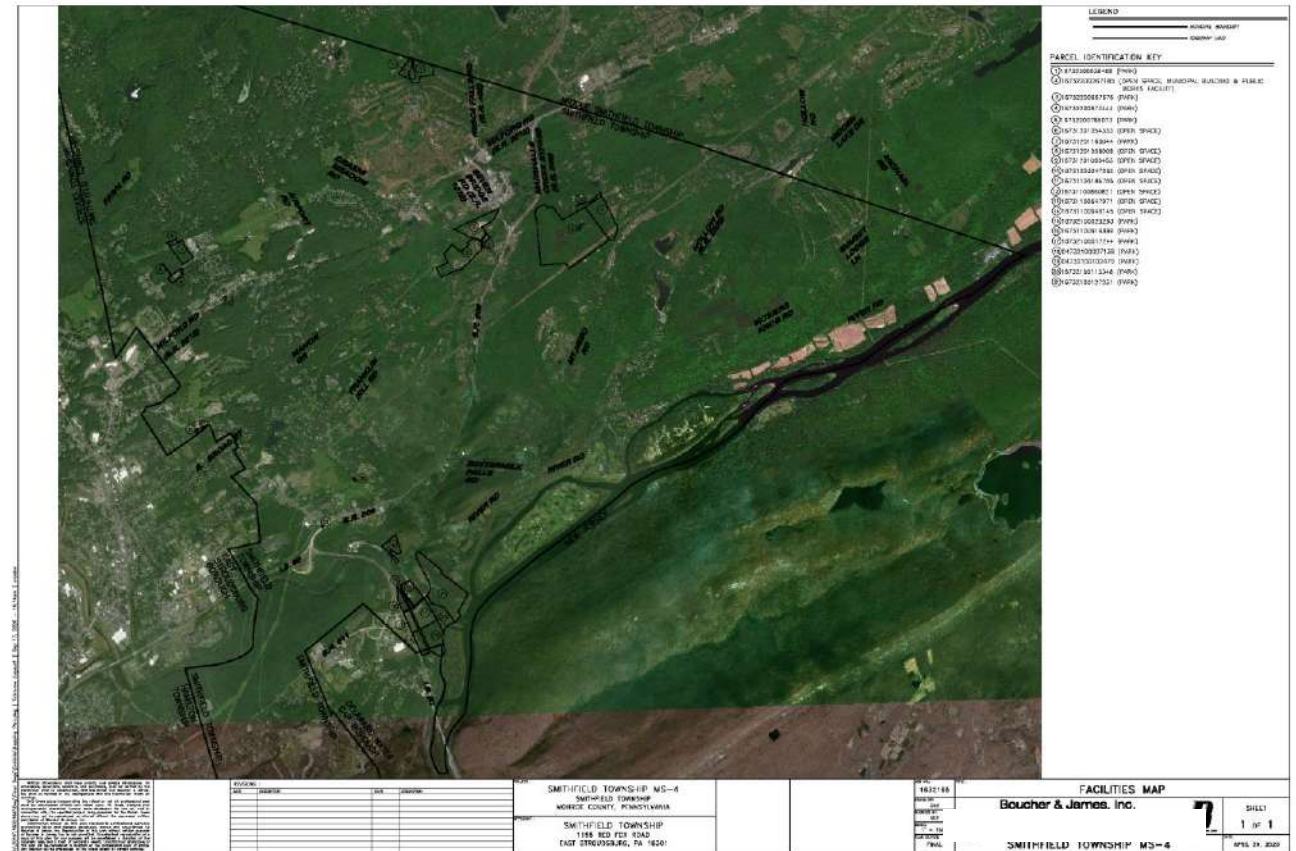
MCM #6 – Pollution Prevention and Good Housekeeping for Municipal Facilities

Minimum Control Measure #6

Pollution Prevention and Good Housekeeping for Municipal Facilities

BMP #1

Identify and document all operations owned and operated by the Township and have the potential for generating pollution in stormwater runoff to the MS4.

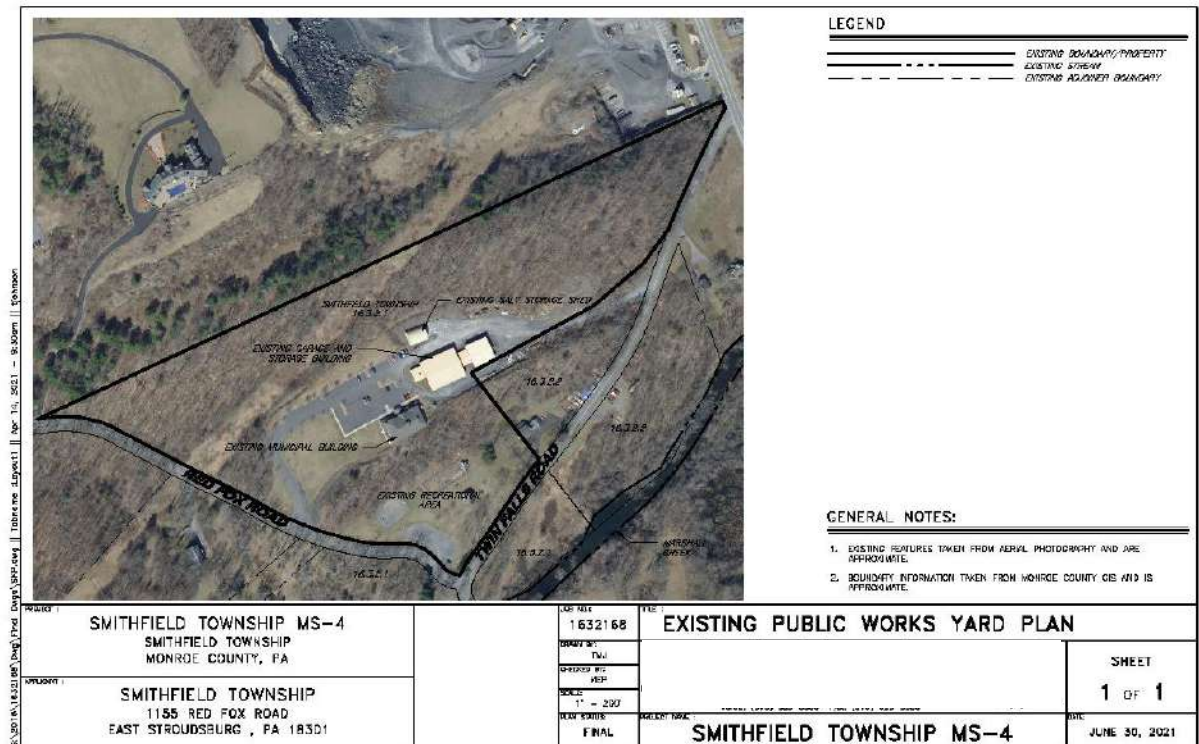


Minimum Control Measure #6

Pollution Prevention and Good Housekeeping for Municipal Facilities

BMP #2

Develop, implement, and maintain a written O&M program for all operations that could contribute to the discharge of pollutants from the MS-4 identified in BMP #1.



Minimum Control Measure #6

Pollution Prevention and Good Housekeeping for Municipal Facilities

BMP #3

Develop and implement an employee training program that addresses appropriate topics to further the goal of preventing or reducing the discharge of pollutants to the MS-4.



<https://strunk-albert.com/portfolio/smithfield-township-municipal-complex/>

Year 5 Report Goals

- Programs for each Minimum Control Measure including documentation of how each MCM has been satisfied.
- Provide a list of newly constructed and/or proposed Best Management Practices that can reduce the sediment load.
- Provide a list of Pollutant Control Measures including the sources of pathogens.
- Provide proof that the Stormwater Management Report has been updated to be consistent with the 2022 model ordinance.

Questions and Comments

Additional MS₄ educational materials can be found on the Township's and the Pennsylvania Department of Environmental Protection's websites.