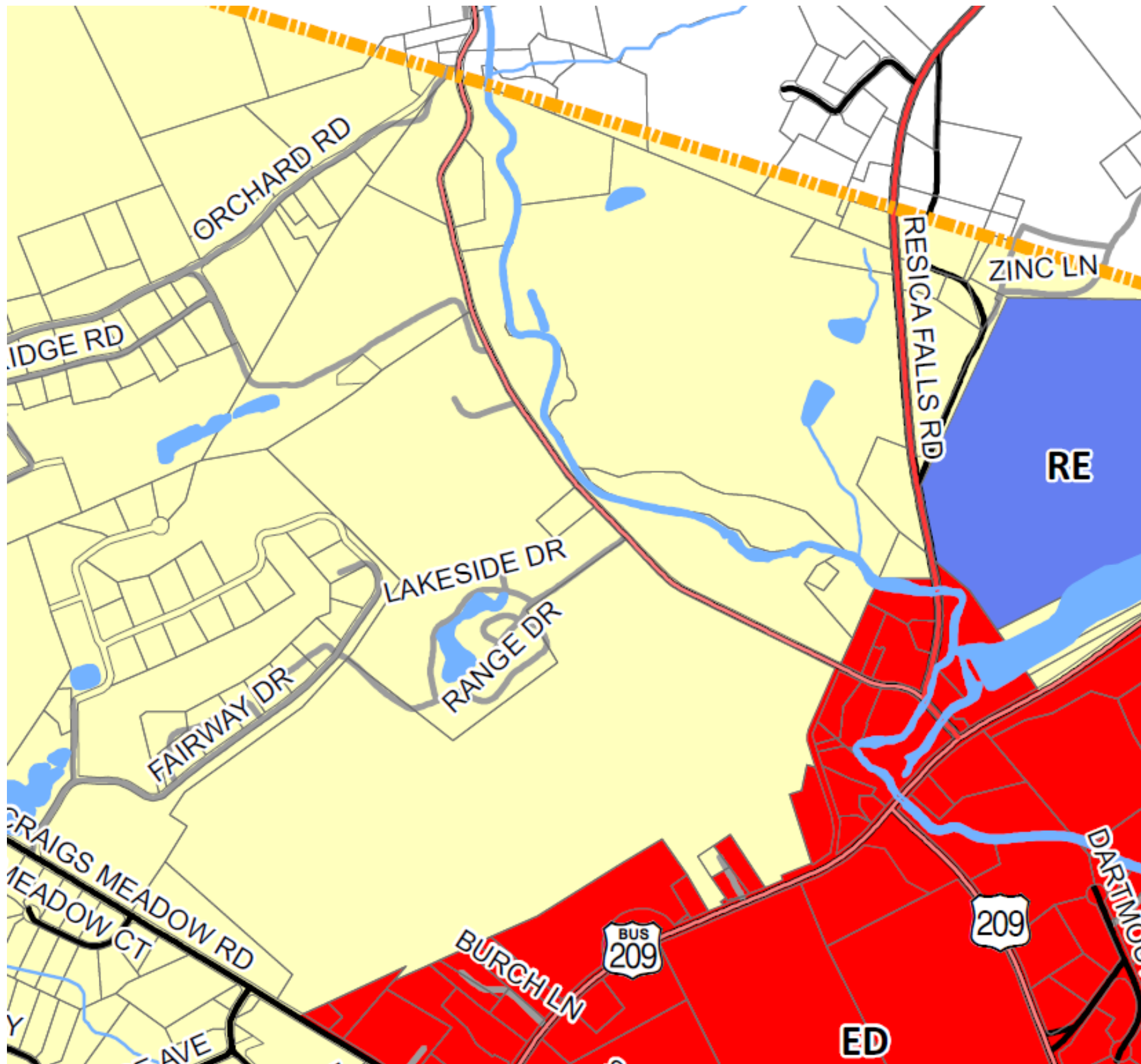


CURRENT ZONING MAP—EXHIBIT Z-1



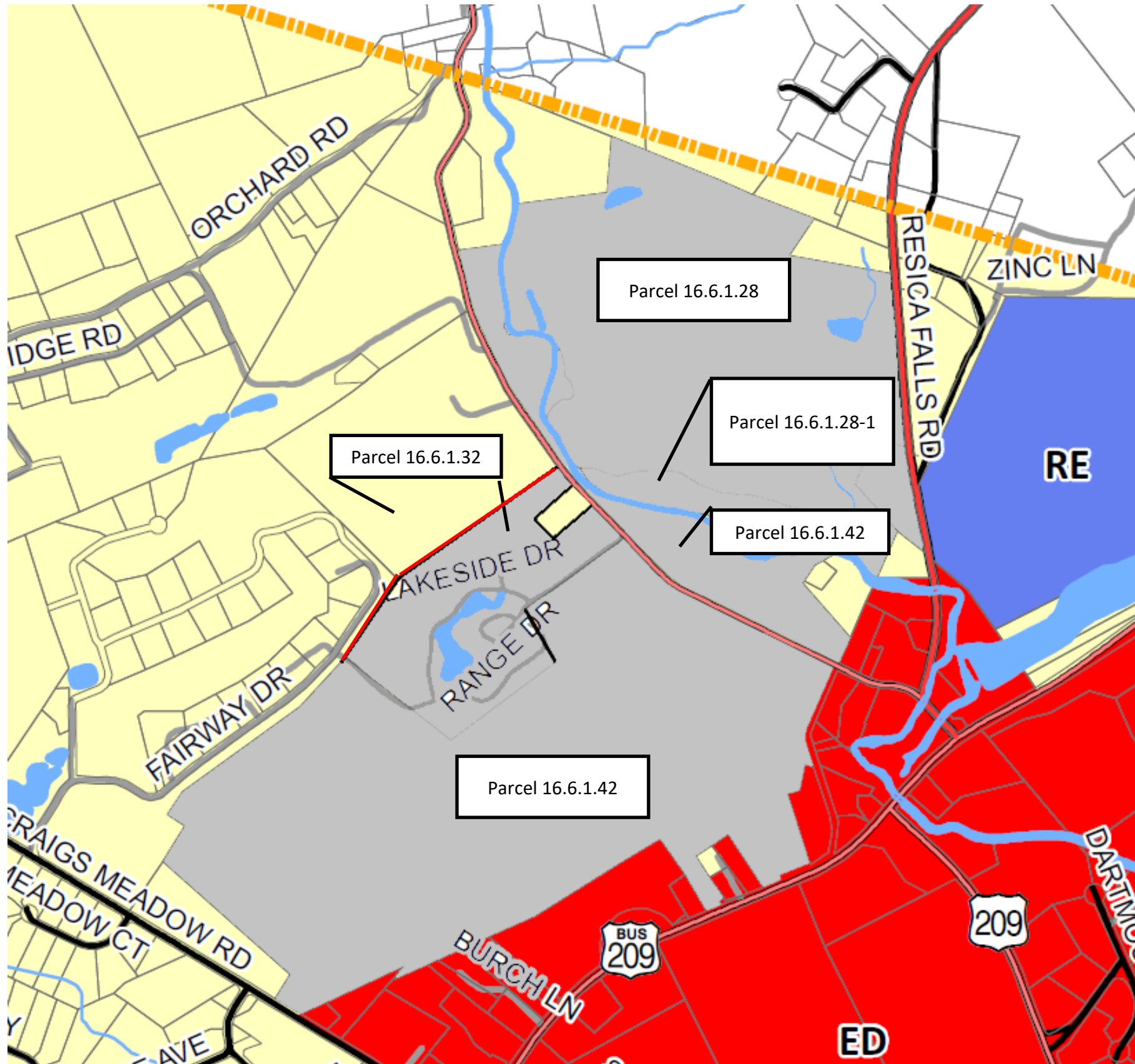
LEGEND

Zoning Districts

- ED - Economic Development
- M1 - Industrial
- R1 - Low-Density Residential
- R2 - Medium Density Residential
- RC - Residential Conservation
- RE - Resort
- Planned Residential Developments

- Rivers & Streams
- Lakes & Ponds
- Road Centerlines
- Tax Parcels
- Municipal Boundary
- County Boundary

PROPOSED ZONING MAP—EXHIBIT Z-2



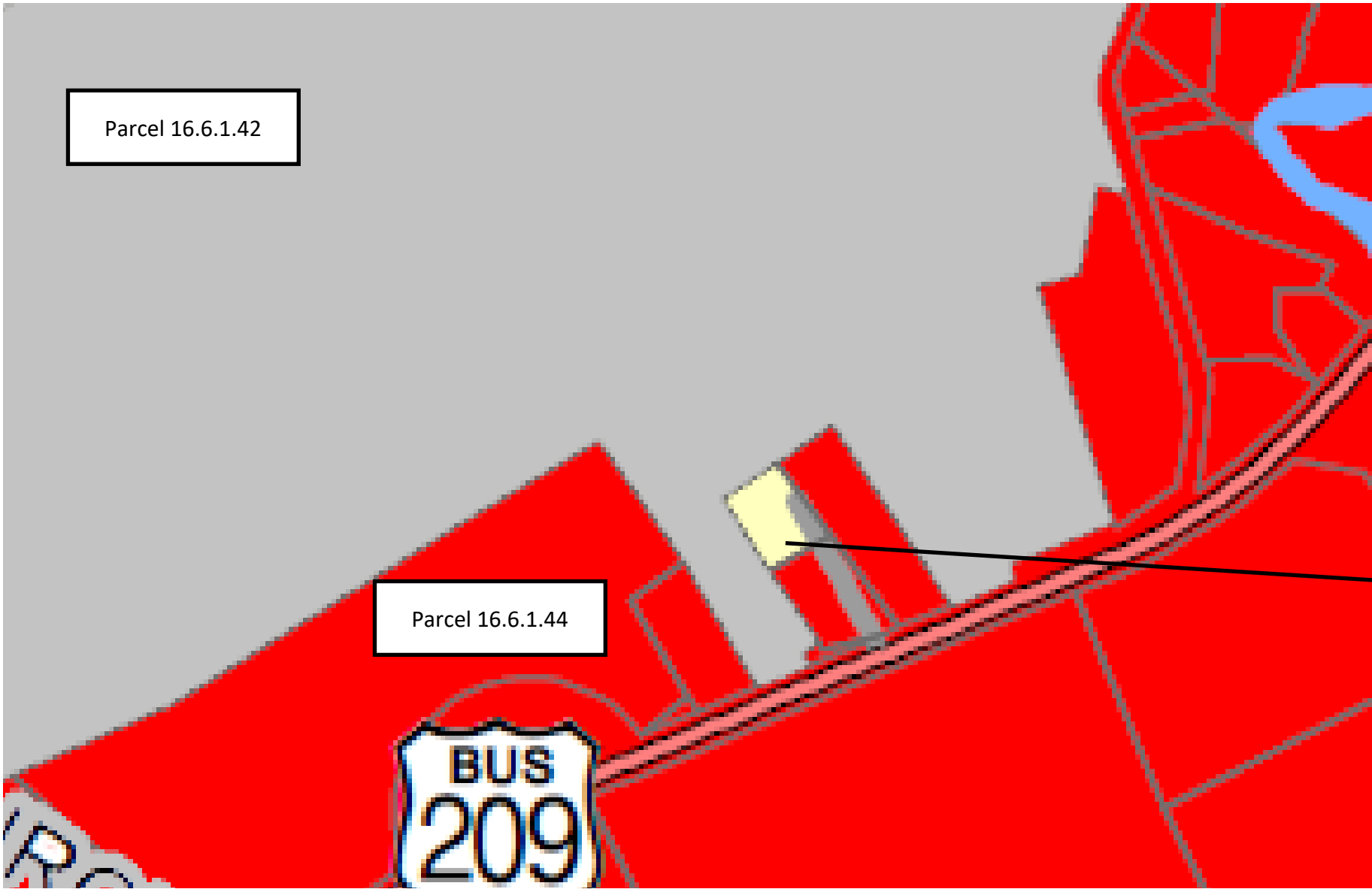
LEGEND

Zoning Districts

- ED - Economic Development
- M1 - Industrial
- R1 - Low-Density Residential
- R2 - Medium Density Residential
- RC - Residential Conservation
- RE - Resort
- Planned Residential Developments
- Proposed Partial Rezone of Parcel

- Rivers & Streams
- Lakes & Ponds
- Road Centerlines
- Tax Parcels
- Municipal Boundary
- County Boundary
- Proposed ED Zone

ZOOM OF PARCEL 16.6.1.46-2—EXHIBIT Z-3



LEGEND

Zoning Districts

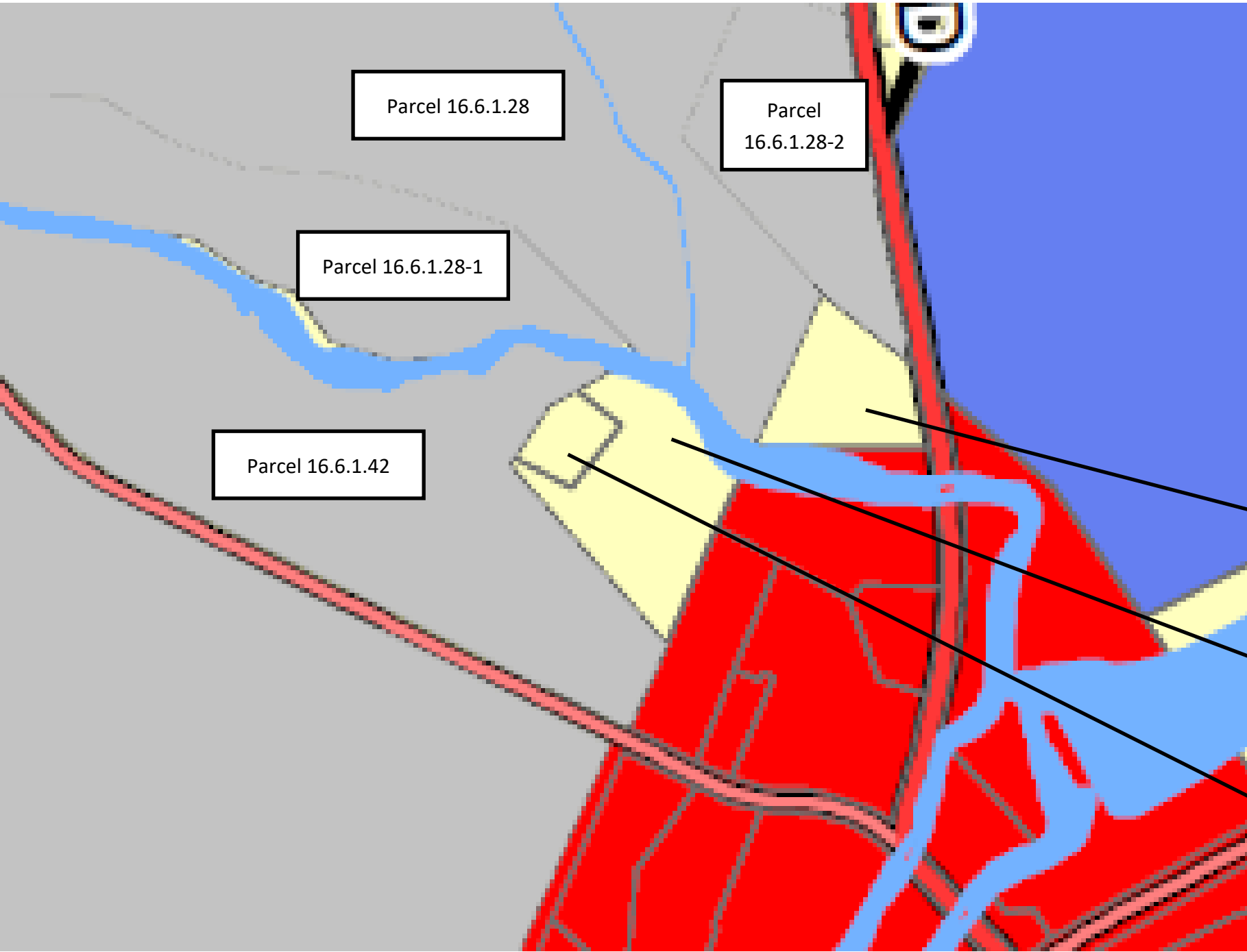
- ED - Economic Development
- M1 - Industrial
- R1 - Low-Density Residential
- R2 - Medium Density Residential
- RC - Residential Conservation
- RE - Resort
- Planned Residential Developments

Other Features

- Rivers & Streams
- Lakes & Ponds
- Road Centerlines
- Tax Parcels
- Municipal Boundary
- County Boundary
- Proposed ED Zone

Parcel 16.6.1.46-2 (111 Sunshine Ln). This parcel will be spot zoned.

ZOOM OF PARCELS 16.6.1.30, 16.6.1.42-1, and 16.5.1.6-5-1—EXHIBIT Z-4



LEGEND

Zoning Districts

- ED - Economic Development
- M1 - Industrial
- R1 - Low-Density Residential
- R2 - Medium Density Residential
- RC - Residential Conservation
- RE - Resort
- Planned Residential Developments

- Rivers & Streams
- Lakes & Ponds
- Road Centerlines
- Tax Parcels
- Municipal Boundary
- County Boundary
- Proposed ED Zone

Parcel 16.5.1.6-5-1. This parcel will be spot zoned.

Parcel 16.6.1.42-1(126 Marshalls Creek Rd). This parcel will be spot zoned.

Parcel 16.6.1.30. This parcel requires further clarification regarding applicant's wish to rezone, but is also in danger of spot zoning.

ZOOM OF PARCEL 16.6.1.31—EXHIBIT Z-5

